

## COMMITMENT

Our commitment is to provide quality workmanship and customer satisfaction .

We have implemented a continuous quality improvement program, making our workforce renowned as The best in the field.

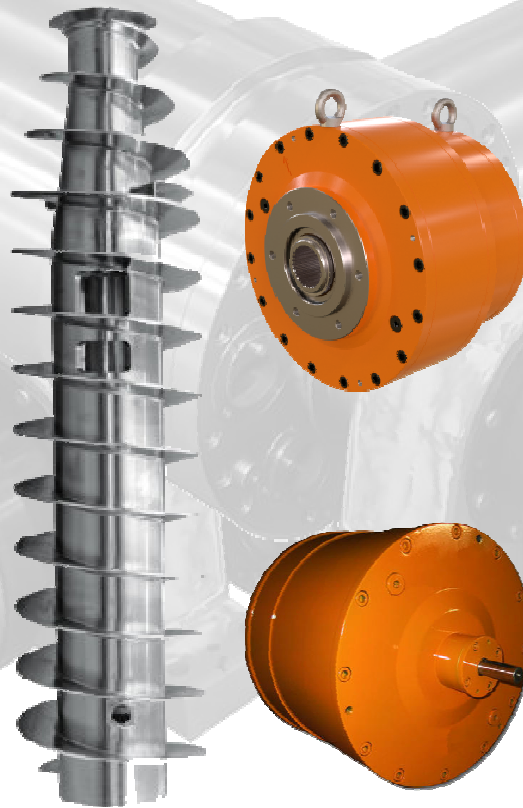
Be it repairing or manufacturing we are determined to do it right  
"The first time & every time"

To ensure client satisfaction all work must be approved by our production & QC manager prior to shipping.

Offering our clients the most cost effective way of rebuilding, repairing or replacing their components

## CAPABILITIES

Alignment, Boring, Inspection, Machining, Milling, Overhaul, Reassembly, Balancing, Disassembly, Grinding, Installation, Modification, Parts Duplication



**ROTECH MACHINE**

## ROTECH MACHINE

YOUR CENTRIFUGE  
REPAIR SPECIALIST



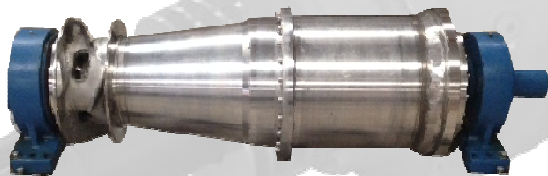
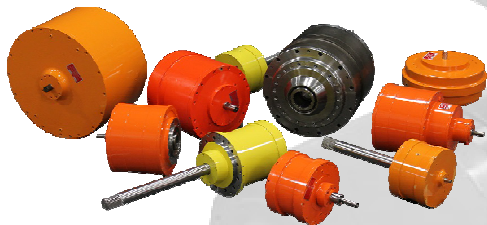
10223 BROADWAY ST, SUITE P333  
PEARLAND, TX 77584  
PHONE 281-712-7900  
INFO@ROTECHMACHINE.NET

## EXPERIENCE

Basket, Decanter, Disc,  
Peeler & Pusher

## EMERGENCY SERVICE

When faced with deadlines,  
outages or emergency  
breakdowns, our commitment  
provides expert prompt service  
designed to minimize downtime



**ROTECH MACHINE**

Rotech Machine specializes in  
fabricating, rebuilding &  
remanufacturing of centrifuges,  
separators & centrifuge  
components

Repairs can be performed by our  
well trained personnel using only  
premium quality materials to as-  
sure that the repairs meet or ex-  
ceed OEM specifications.

Our machining facilities are  
equipped to handle any repair  
that your separation equipment  
may need.

**ROTECH MACHINE**

10223 BROADWAY ST, SUITE P333

PEARLAND, TX 77584

PHONE 281-712-7900

INFO@ROTECHMACHINE.NET

## MANUFACTURES

Alfa Laval, Ametek, ATM,  
Baker-Perkins, Bird, Dorr-Oliver,  
Flotweg, Heinkel, KMI, Merco,  
Sharples, Tolhurst, Western  
States, Westfalia  
and Many More.....

## INDUSTRIES

Rotech has earned its reputation  
by providing repair &  
maintenance service for  
chemical & wastewater industry  
the operation diversified &  
expanded to the following  
industries.

Bio Fuel, Chemical,  
Environmental Remediation,  
Food & Dairy, Mining, Petro  
Chemical, Pharmaceutical,  
Plastic, Pulp & Paper, Rendering

